

Smart Circuit Breaker



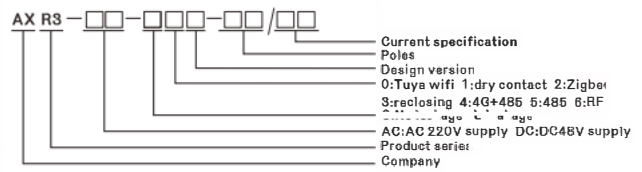
Overview

- R3 Smart Circuit Breaker is an electrical terminal distribution device developed for smart and safe electricity and energy management systems in buildings. This product is an Internet of Things (IoT) smart circuit breaker that uses electronic technology to control the normal operation of traditional circuit breakers. It features remote opening and closing control, local mode selection, timed opening and closing settings, and other functions.

Functional Features

- Supports multiple control platforms such as Tuya APP, M Home APP, RS485, dry contacts and wireless kinetic energy.
- Supports local or remote operation for turning on and off
- Supports DIN-rail mounting
- Remote control without distance limitations
- Supports customization of protection thresholds
- Supports automatic reclosing and customizable reclosing time configuration

Model And Meaning



Technical Parameters

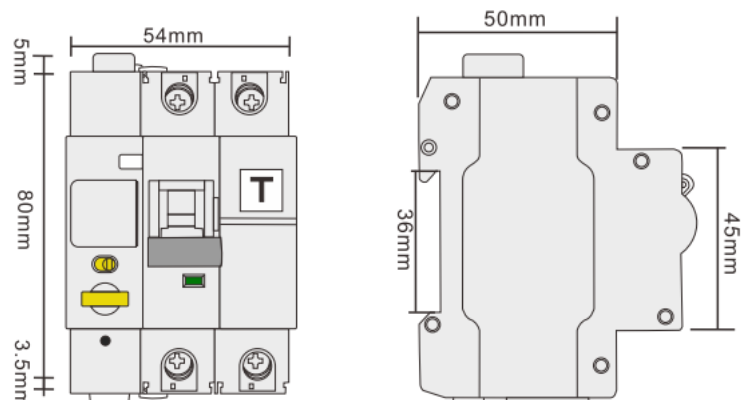
	R3 Series
Poles	1P+N
Mounting poles	3P
Rated current	10A、16A、25A、32A、40A、50A、63A
Rated working voltage and frequency	220/230VAC 50Hz
Breaking capacity	6KA
Type	Type C · Type D
Standby power consumption	<3W
Communication	Mi Home WIFI <input type="checkbox"/>
	TuyaWIFI <input type="checkbox"/>
	TuyaZIGBEE <input type="checkbox"/>
	dry contact <input type="checkbox"/>
	Rs485 <input type="checkbox"/>
Tripping time	≤0.1S
Short circuit time	≤0.04S
International Standard	GB/T16917.1-2014
Control mode	Integrated manual and automatic control
Installation requirements	The installation location's altitude should not exceed 3000m
Temperature requirements	The lower limit of ambient air temperature should not be lower than -20° C, and the upper limit should not exceed +70° C
IP rating	IP20
Product size	88.5mm*64mm*60mm
Configurable parameters	Over-voltage protection <input checked="" type="checkbox"/>
	Leakage protection <input checked="" type="checkbox"/>
	Reclosing <input type="checkbox"/>

Conventional features Optional features (Depending on different models)

Product Wiring Diagram



Product Dimensions Diagram



Network Settings

Installing Applications

You can scan the QR code below to download the corresponding app, or search for "TuYa" or "MiHome" in the app store to download the respective app.



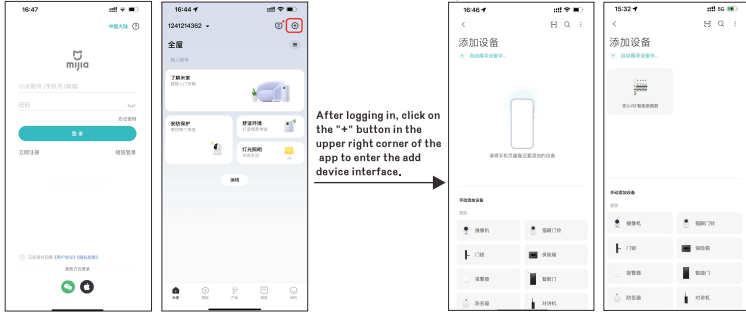
Tuya APP



MiHome APP

Mi Home WiFi Device Add

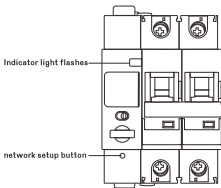
1. Download MiHome APP and choose cell phone one-click login



After logging in, click on the "+" button in the upper right corner of the app to enter the add device interface.

After the phone is connected to the WIFI signal (5G network needs to be switched to 2.4G), enter the APP add device interface to connect automatically

2. After the device is powered on for 10 seconds, press the 3S device button briefly and then release it, the switch indicator light flashes to enter the distribution mode

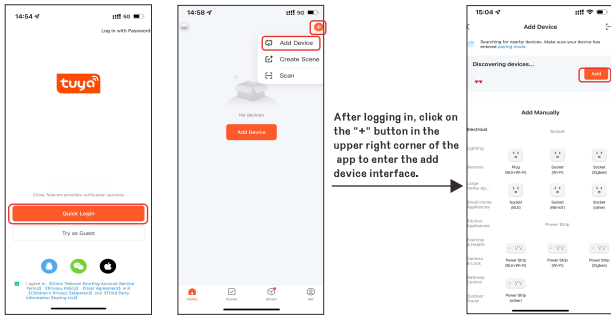


Enter the Wi-Fi password in the APP and click Next to wait for the connection to be successful.



TuYa Wifi Device Add

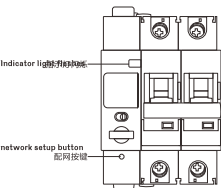
1. Download tuya APP and choose cell phone one-click login



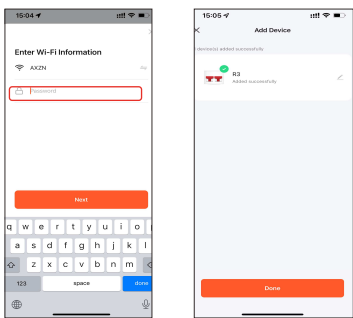
After logging in, click on the "+" button in the upper right corner of the app to enter the add device interface.

After the phone is connected to the WIFI signal (5G network needs to be switched to 2.4G), enter the APP add device interface to connect automatically

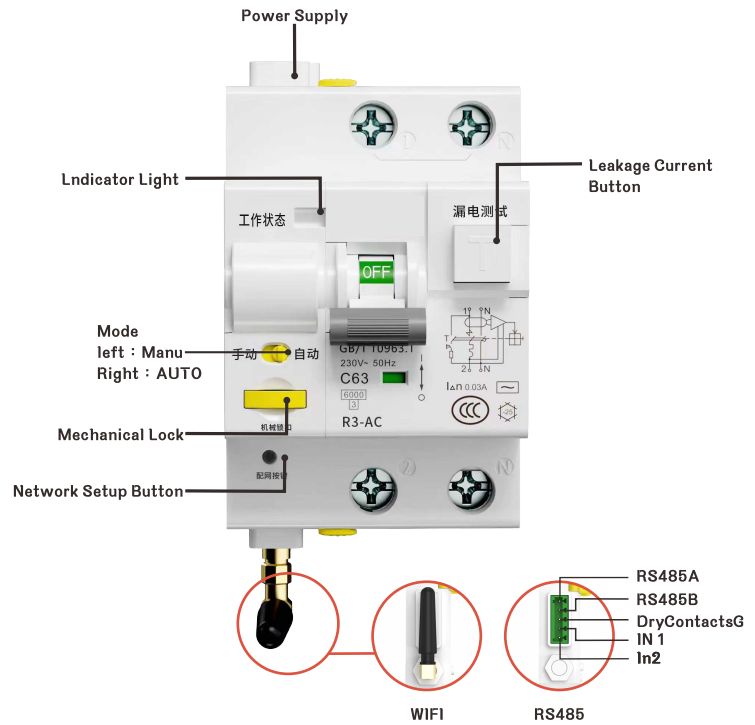
2. After the device is powered on for 10 seconds, press the 3S device button briefly and then release it, the switch indicator light flashes to enter the distribution mode



Enter the Wi-Fi password in the APP and click Next to wait for the connection to be successful.



Panel Diagram



Handling of E-waste

All E-waste should be disposed of in accordance with current WEEE regulations



Attention

The product must be installed by a qualified electrician. All electrical connections to the time relay must comply with appropriate safety standards

R3 Series Smart Circuit Breaker



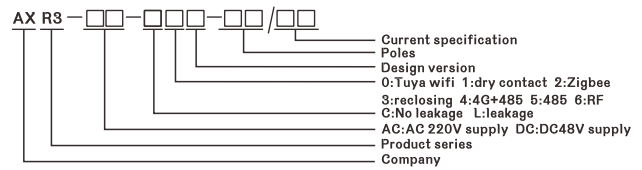
Overview

- R3 Smart Circuit Breaker is an electrical terminal distribution device developed for smart and safe electricity and energy management systems in buildings. This product is an Internet of Things (IoT) smart circuit breaker that uses electronic technology to control the normal operation of traditional circuit breakers. It features remote opening and closing control, local mode selection, timed opening and closing settings, and other functions.

Functional Features

- Supports multiple control platforms such as Tuya APP, Mi Home APP, RS485, dry contacts and wireless kinetic energy.
- Supports local or remote operation for turning on and off
- Supports DIN-rail mounting
- Remote control without distance limitations
- Supports customization of protection thresholds
- Supports automatic reclosing and customizable reclosing time configuration

Model And Meaning



Technical Parameters

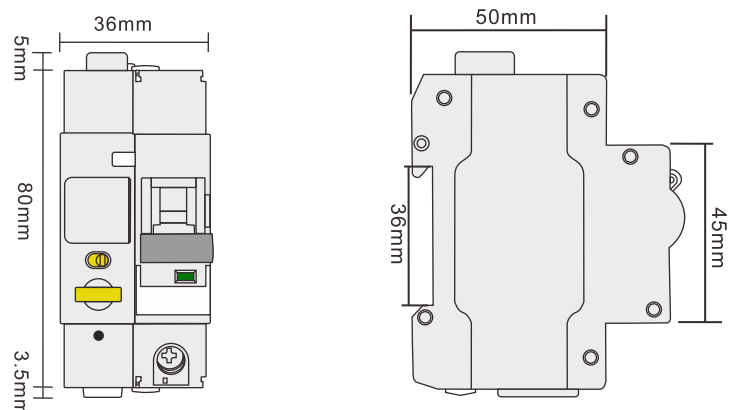
	R3 Series
Poles	1P
Mounting poles	2P
Rated current	10A、16A、25A、32A、40A、50A、63A
Rated working voltage and frequency	220/230VAC 50Hz
Breaking capacity	6KA
Type	Type C · Type D
Standby power consumption	<3W
Communication	<input type="checkbox"/> Mi Home WIFI <input type="checkbox"/> TuyaWIFI <input type="checkbox"/> TuyaZIGBEE <input type="checkbox"/> dry contact <input type="checkbox"/> Rs485
Tripping time	≤0.1S
Short circuit time	≤0.04S
International Standard	GB/T16917.1-2014
Control mode	Integrated manual and automatic control
Installation requirements	The installation location's altitude should not exceed 3000m
Temperature requirements	The lower limit of ambient air temperature should not be lower than -20° C, and the upper limit should not exceed +70° C
IP rating	IP20
Product size	88.5mm*36mm*50mm
Configurable parameters	<input type="checkbox"/> Over-voltage protection

Conventional features Optional features (Depending on different models)

Product Wiring Diagram



Product Dimensions Diagram



Network Settings

Installing Applications

You can scan the QR code below to download the corresponding app, or search for "TuYa" or "MiHome" in the app store to download the respective app.



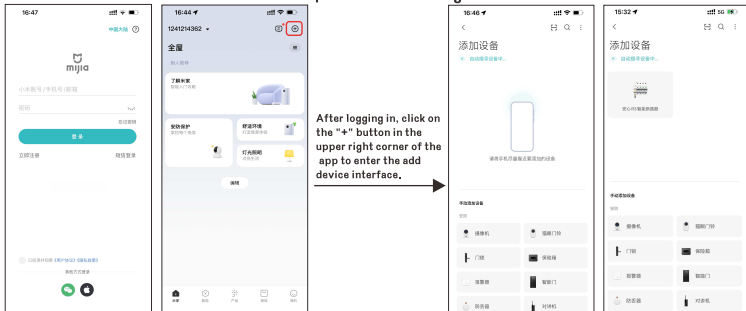
Tuya APP



MiHome APP

Mi Home WiFi Device Add

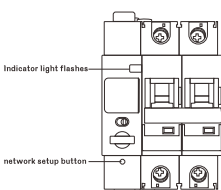
1. Download MiHome APP and choose cell phone one-click login



After logging in, click on the "+" button in the upper right corner of the app to enter the add device interface.

After the phone is connected to the WIFI signal (5G network needs to be switched to 2.4G), enter the APP add device interface to connect automatically

2. After the device is powered on for 10 seconds, press the 3S device button briefly and then release it, the switch indicator light flashes to enter the distribution mode

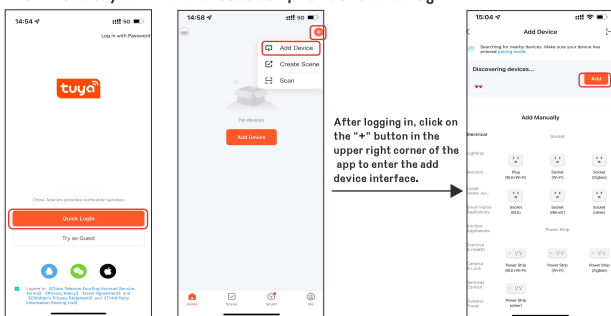


Enter the Wi-Fi password in the APP and click Next to wait for the connection to be successful.



TuYa Wifi Device Add

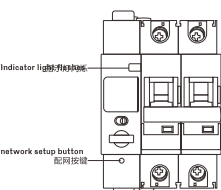
1. Download tuya APP and choose cell phone one-click login



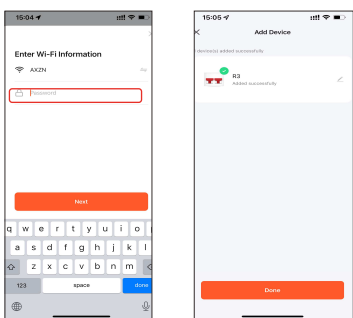
After logging in, click on the "+" button in the upper right corner of the app to enter the add device interface.

After the phone is connected to the WIFI signal (5G network needs to be switched to 2.4G), enter the APP add device interface to connect automatically

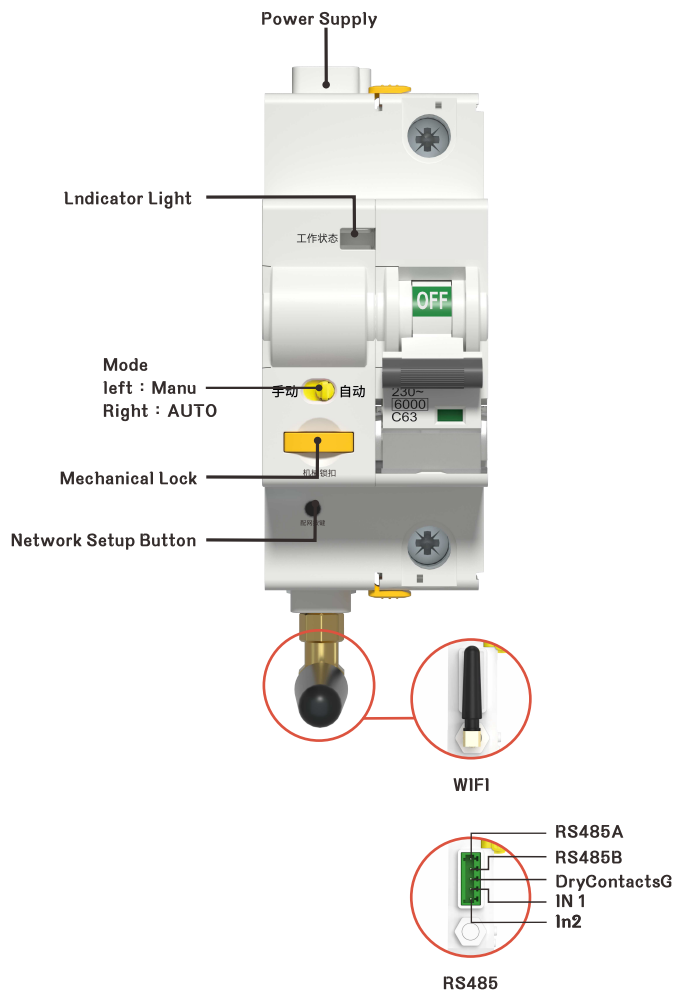
2. After the device is powered on for 10 seconds, press the 3S device button briefly and then release it, the switch indicator light flashes to enter the distribution mode



Enter the Wi-Fi password in the APP and click Next to wait for the connection to be successful.



Panel Diagram



Handling of E-waste

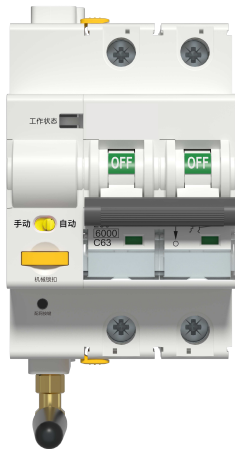
All E-waste should be disposed of in accordance with current WEEE regulations



Attention

The product must be installed by a qualified electrician. All electrical connections to the time relay must comply with appropriate safety standards

R3 Series Smart Circuit Breaker



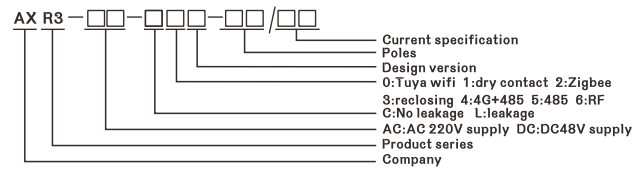
Overview

- R3 Smart Circuit Breaker is an electrical terminal distribution device developed for smart and safe electricity and energy management systems in buildings. This product is an Internet of Things (IoT) smart circuit breaker that uses electronic technology to control the normal operation of traditional circuit breakers. It features remote opening and closing control, local mode selection, timed opening and closing settings, and other functions.

Functional Features

- Supports multiple control platforms such as Tuya APP, Mi Home APP, RS485, dry contacts and wireless kinetic energy.
- Supports local or remote operation for turning on and off
- Supports DIN-rail mounting
- Remote control without distance limitations
- Supports customization of protection thresholds
- Supports automatic reclosing and customizable reclosing time configuration

Model And Meaning



Technical Parameters

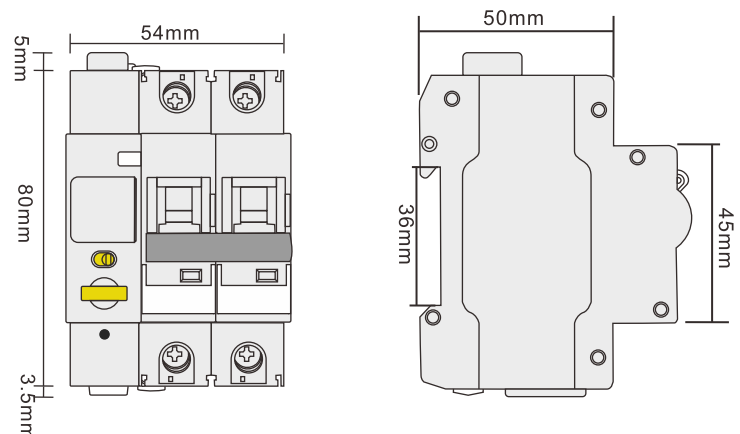
	R3 Series
Poles	2P
Mounting poles	3P
Rated current	10A、16A、25A、32A、40A、50A、63A
Rated working voltage and frequency	220/230VAC 50Hz
Breaking capacity	6KA
Type	Type C - Type D
Standby power consumption	<3W
Communication	Mi Home WIFI <input type="checkbox"/>
	TuyaWIFI <input type="checkbox"/>
	TuyaZIGBEE <input type="checkbox"/>
	dry contact <input type="checkbox"/>
	Rs485 <input type="checkbox"/>
Tripping time	≤0.1S
Short circuit time	≤0.04S
International Standard	GB/T16963.1-2020
Control mode	Integrated manual and automatic control
Installation requirements	The installation location's altitude should not exceed 3000m
Temperature requirements	The lower limit of ambient air temperature should not be lower than -20° C, and the upper limit should not exceed +70° C
IP rating	IP20
Product size	88.5mm*54mm*50mm
Configurable parameters	Over-voltage protection <input type="checkbox"/>

Conventional features Optional features (Depending on different models)

Product Wiring Diagram



Product Dimensions Diagram



Network Settings

Installing Applications

You can scan the QR code below to download the corresponding app, or search for "TuYa" or "MiHome" in the app store to download the respective app.



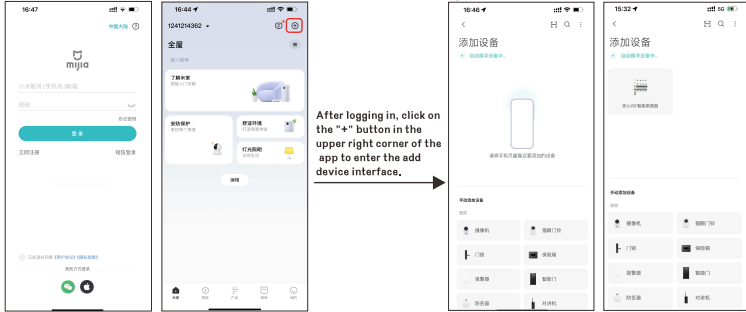
Tuya APP



MiHome APP

Mi Home WiFi Device Add

1. Download MiHome APP and choose cell phone one-click login



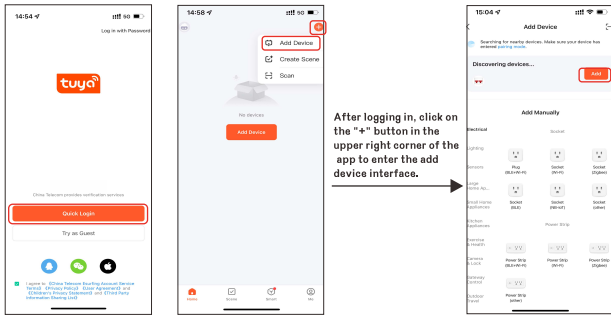
After the phone is connected to the WIFI signal (5G network needs to be switched to 2.4G), enter the APP add device interface to connect automatically

2. After the device is powered on for 10 seconds, press the 3S device button briefly and then release it, the switch indicator light flashes to enter the distribution mode



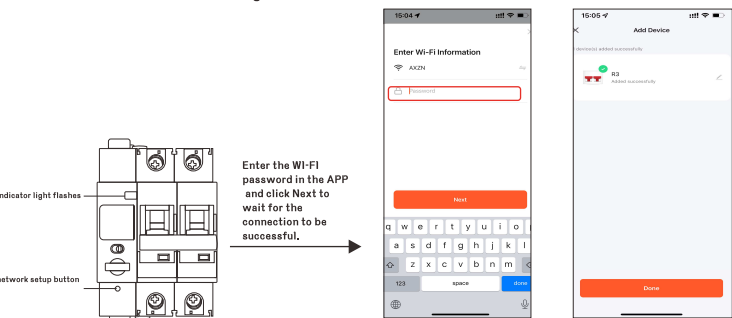
TuYa Wifi Device Add

1. Download tuya APP and choose cell phone one-click login

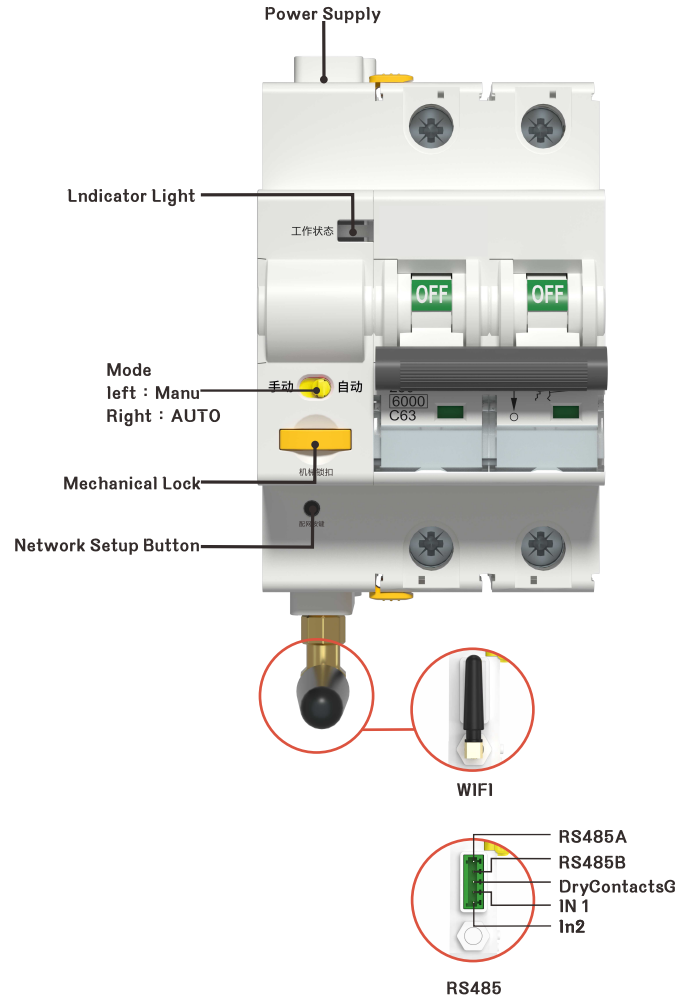


After the phone is connected to the WIFI signal (5G network needs to be switched to 2.4G), enter the APP add device interface to connect automatically

2. After the device is powered on for 10 seconds, press the 3S device button briefly and then release it, the switch indicator light flashes to enter the distribution mode



Panel Diagram



Handling of E-waste

All E-waste should be disposed of in accordance with current WEEE regulations



Attention

The product must be installed by a qualified electrician. All electrical connections to the time relay must comply with appropriate safety standards

R3 Series Smart Circuit Breaker



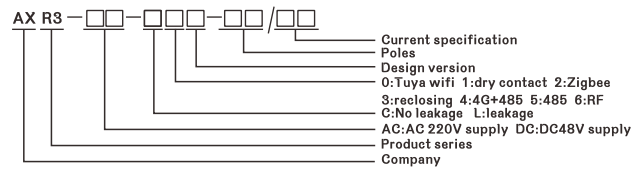
Overview

- R3 Smart Circuit Breaker is an electrical terminal distribution device developed for smart and safe electricity and energy management systems in buildings. This product is an Internet of Things (IoT) smart circuit breaker that uses electronic technology to control the normal operation of traditional circuit breakers. It features remote opening and closing control, local mode selection, timed opening and closing settings, and other functions.

Functional Features

- Supports multiple control platforms such as Tuya APP, Mi Home APP, RS485, dry contacts and wireless kinetic energy.
- Supports local or remote operation for turning on and off
- Supports DIN-rail mounting
- Remote control without distance limitations
- Supports customization of protection thresholds
- Supports automatic reclosing and customizable reclosing time configuration

Model And Meaning



Technical Parameters

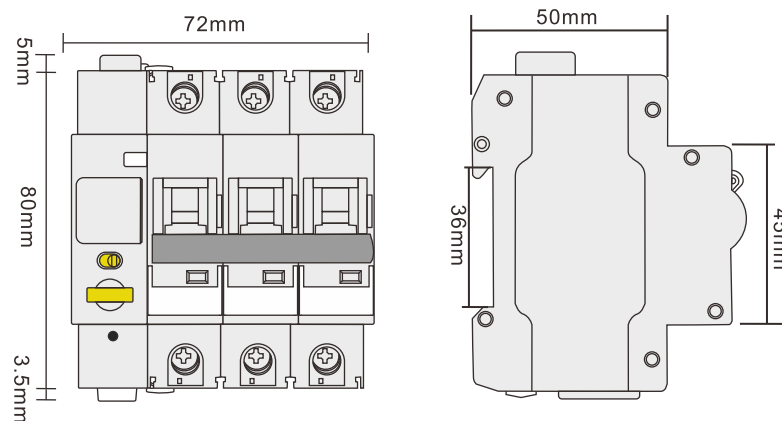
R3 Series	
Poles	3P
Mounting poles	4P
Rated current	10A、16A、25A、32A、40A、50A、63A
Rated working voltage and frequency	220/230VAC 50Hz
Breaking capacity	6KA
Type	Type C · Type D
Standby power consumption	<3W
Communication	Mi Home WIFI <input type="checkbox"/>
	TuyaWIFI <input type="checkbox"/>
	TuyaZIGBEE <input type="checkbox"/>
	dry contact <input type="checkbox"/>
	Rs485 <input type="checkbox"/>
Tripping time	≤0.1S
Short circuit time	≤0.04S
International Standard	GB/T16963.1-2020
Control mode	Integrated manual and automatic control
Installation requirements	The installation location's altitude should not exceed 3000m
Temperature requirements	The lower limit of ambient air temperature should not be lower than -20° C, and the upper limit should not exceed +70° C
IP rating	IP20
Product size	88.5mm*72mm*50mm
Configurable parameters	Over-voltage protection <input checked="" type="checkbox"/>

Conventional features Optional features (Depending on different models)

Product Wiring Diagram



Product Dimensions Diagram



Network Settings

Installing Applications

You can scan the QR code below to download the corresponding app, or search for "TuYa" or "MiHome" in the app store to download the respective app.



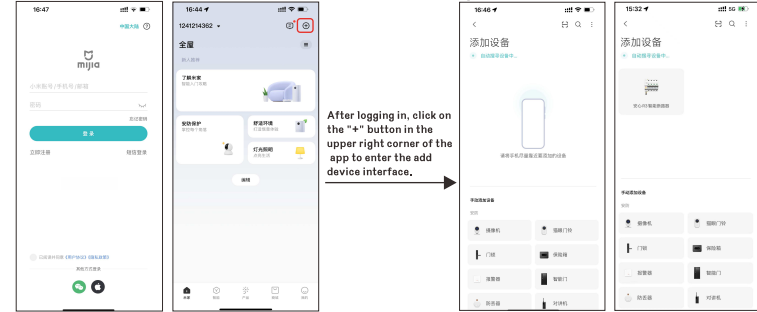
Tuya APP



MiHome APP

Mi Home WiFi Device Add

1. Download MiHome APP and choose cell phone one-click login



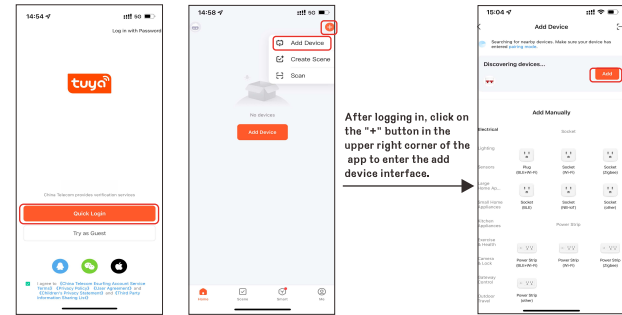
After the phone is connected to the WIFI signal (5G network needs to be switched to 2.4G), enter the APP add device interface to connect automatically

2. After the device is powered on for 10 seconds, press the 3S device button briefly and then release it, the switch indicator light flashes to enter the distribution mode



TuYa Wifi Device Add

1. Download tuya APP and choose cell phone one-click login

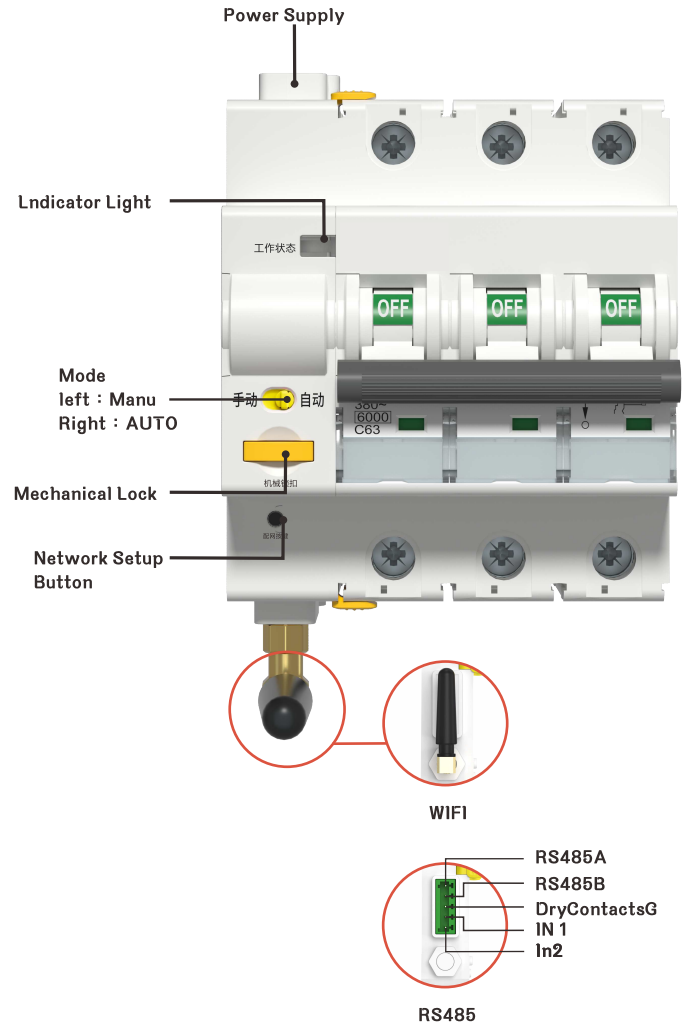


After the phone is connected to the WIFI signal (5G network needs to be switched to 2.4G), enter the APP add device interface to connect automatically

2. After the device is powered on for 10 seconds, press the 3S device button briefly and then release it, the switch indicator light flashes to enter the distribution mode



Panel Diagram



Handling of E-waste

All E-waste should be disposed of in accordance with current WEEE regulations



Attention

The product must be installed by a qualified electrician. All electrical connections to the time relay must comply with appropriate safety standards

R3 Series Smart Circuit Breaker



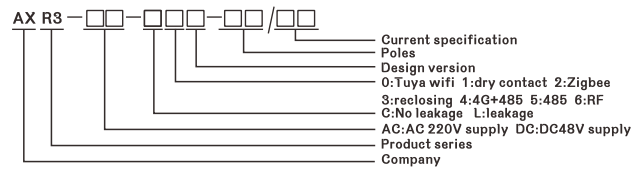
Overview

- R3 Smart Circuit Breaker is an electrical terminal distribution device developed for smart and safe electricity and energy management systems in buildings. This product is an Internet of Things (IoT) smart circuit breaker that uses electronic technology to control the normal operation of traditional circuit breakers. It features remote opening and closing control, local mode selection, timed opening and closing settings, and other functions.

Functional Features

- Supports multiple control platforms such as Tuya APP, Mi Home APP, RS485, dry contacts and wireless kinetic energy.
- Supports local or remote operation for turning on and off
- Supports DIN-rail mounting
- Remote control without distance limitations
- Supports customization of protection thresholds
- Supports automatic reclosing and customizable reclosing time configuration

Model And Meaning

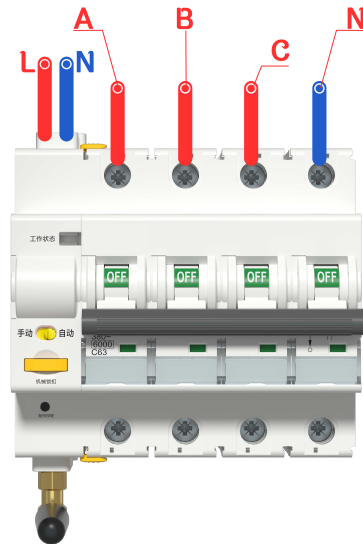


Technical Parameters

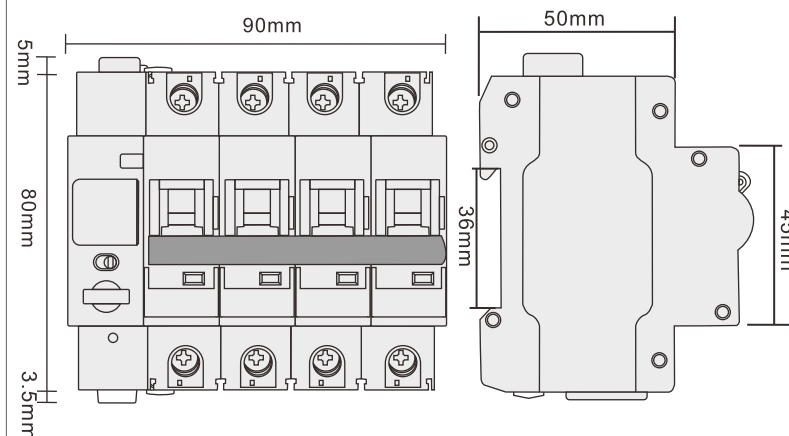
R3 Series	
Poles	4P
Mounting poles	5P
Rated current	10A、16A、25A、32A、40A、50A、63A
Rated working voltage and frequency	220/230VAC 50Hz
Breaking capacity	6KA
Type	Type C · Type D
Standby power consumption	<3W
Communication	<input type="checkbox"/> Mi Home WIFI <input type="checkbox"/> TuyaWIFI <input type="checkbox"/> TuyaZIGBEE <input type="checkbox"/> dry contact <input type="checkbox"/> Rs485
Tripping time	≤0.1S
Short circuit time	≤0.04S
International Standard	GB/T16963.1-2020
Control mode	Integrated manual and automatic control
Installation requirements	The installation location's altitude should not exceed 3000m
Temperature requirements	The lower limit of ambient air temperature should not be lower than -20° C, and the upper limit should not exceed +70° C
IP rating	IP20
Product size	88.5mm*90mm*50mm
Configurable parameters	Over-voltage protection <input checked="" type="checkbox"/>

Conventional features Optional features (Depending on different models)

Product Wiring Diagram



Product Dimensions Diagram



Network Settings

Installing Applications

You can scan the QR code below to download the corresponding app, or search for "TuYa" or "MiHome" in the app store to download the respective app.



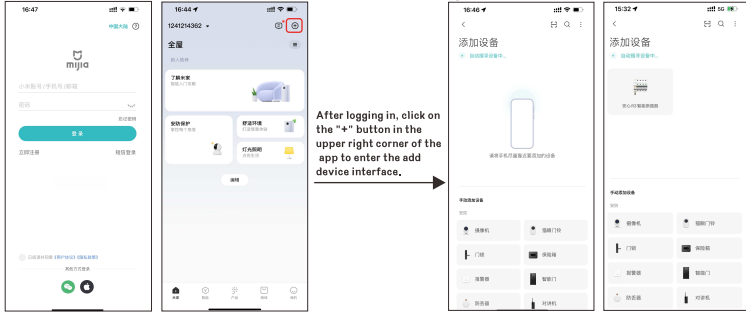
Tuya APP



MiHome APP

Mi Home WiFi Device Add

1. Download MiHome APP and choose cell phone one-click login



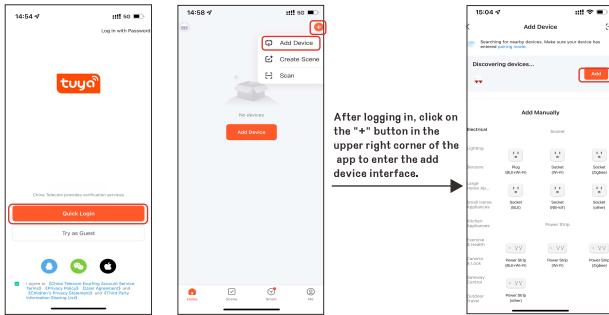
After the phone is connected to the WIFI signal (5G network needs to be switched to 2.4G), enter the APP add device interface to connect automatically

2. After the device is powered on for 10 seconds, press the 3S device button briefly and then release it, the switch indicator light flashes to enter the distribution mode



TuYa Wifi Device Add

1. Download tuya APP and choose cell phone one-click login

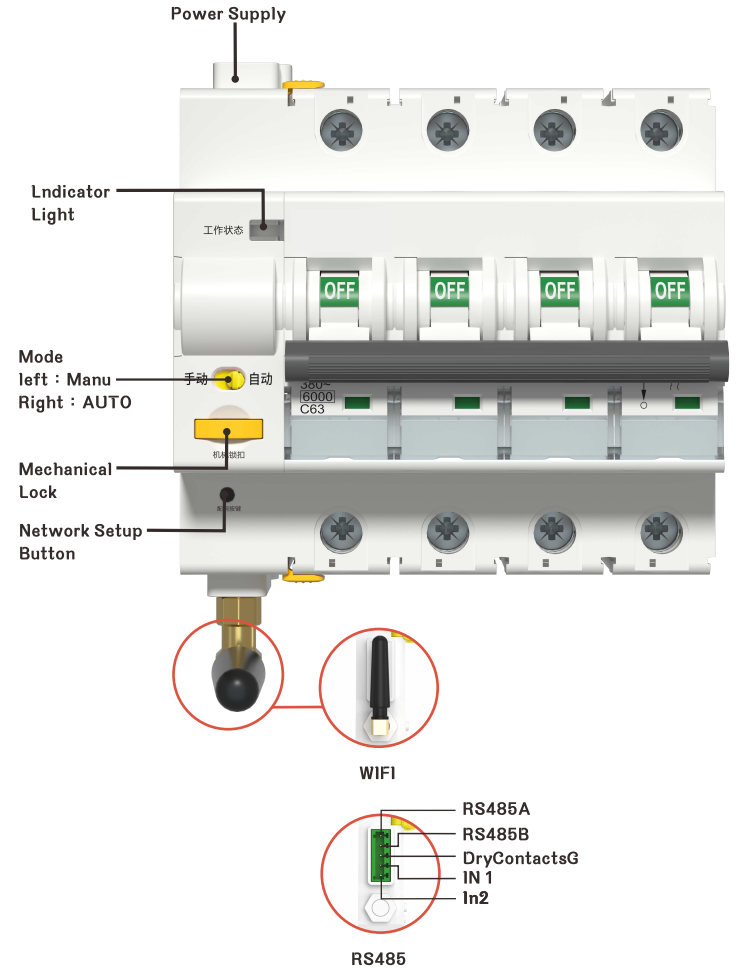


After the phone is connected to the WIFI signal (5G network needs to be switched to 2.4G), enter the APP add device interface to connect automatically

2. After the device is powered on for 10 seconds, press the 3S device button briefly and then release it, the switch indicator light flashes to enter the distribution mode



Panel Diagram



Handling of E-waste

All E-waste should be disposed of in accordance with current WEEE regulations



Attention

The product must be installed by a qualified electrician. All electrical connections to the time relay must comply with appropriate safety standards